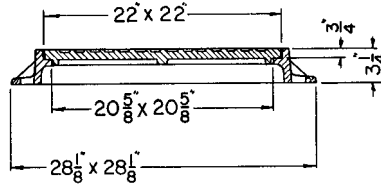


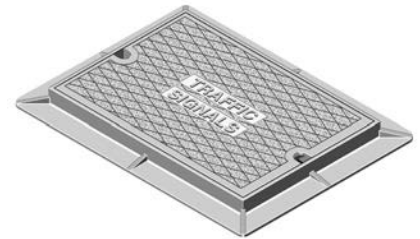
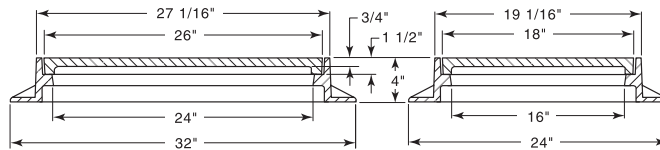
R-6688-2
Handhole Frame, Lid

Light Duty



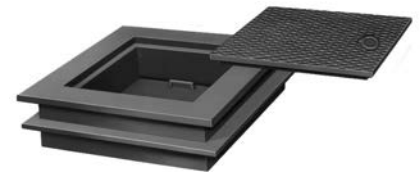
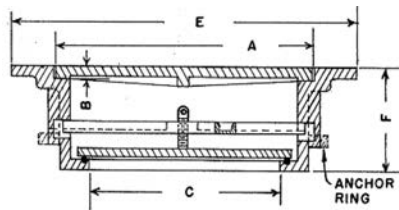
R-6689
Electrical Pull Box Frame, Solid Lid

Heavy Duty



R-6690 Series
Square Manhole Frame, Top Lid, Inner Lid

Light Duty



Type A assembly with optional anchor ring.

For use as frost- or water-resistant assembly on pits, tanks or reservoirs where hydrostatic head is not involved. Inner lid provides protection against surface water inflow. Either Type A or Type B furnished with anchor ring only when specified.



Type B assembly with lock bar.

Dimensions in inches

Catalog No.	Catalog No.	A	B	C	E	F
Type A	Type B					
R-6690-BA	R-6690-BB	24 x 24	3/4	19 x 19	28 1/2 x 28 1/2	7
R-6690-FA	R-6690-FB	32 x 32	3/4	27 x 27	37 x 37	8